

Building Resilience of Waterfront Communities

Recover Better Support Fund



The Challenge

Marginalisation of Waterfront Settlements: Nearly half a million people live in self-built communities in Nigeria's oil capital Port Harcourt. The informal waterfront settlements are among the city's fastest growing and densest neighbourhoods. They are also the most precarious and the inhabitants experience structural exclusions due to restricted educational or employment opportunities, lack of access to health services and under-representation in traditional media. Especially women experience compounding vulnerabilities.

Forced Evictions and Mass Demolitions: The local government decided to demolish large parts of the city's waterfront communities. Within the first two months of 2022, 22,000 people lost their homes with no formal notice and without receiving any kind of compensation.

Shifting Priorities: The absence of effective disease surveillance or health care increased the risk of COVID-19 infections for waterfront communities. However, the priorities and needs of the communities shifted from recovery of the pandemic towards recovery of the mass demolitions while simultaneously facing health issues. New health and security risks were introduced by the demolition and many community members were pushed further into poverty and exposed to endemic diseases.

Project Name	Viral Times 2.0: Standing Her Ground
Commissioned by	Federal Ministry for Economic Cooperation and Development (BMZ)
Country	Nigeria
Implementing Organisation	Collaborative Media Advocacy Platform (CMAP)
Duration	November 2021 – April 2023

The Objective

The goal of the project is to increase local resilience to the multiple and intersecting public health emergencies and to build the capacity of marginalized waterfront communities to claim their development priorities, tenure security and health issues. Also, the project aims to catalyze the community's voice by storytelling.

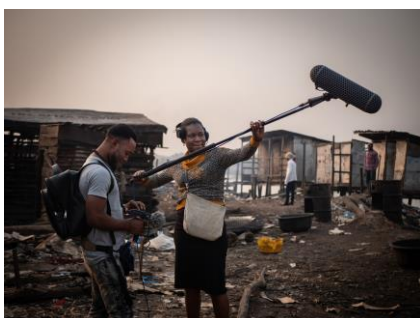
The Target Group

The project targets community members of Port Harcourt's informal waterfront settlements that were already highly precarious before the mass demolitions. Women and girls from the waterfront communities are specifically targeted and contribute to the project as they experience compounding vulnerabilities and are disproportionately impacted by the health crises, disruptions and dislocations.

The Approach

Chicoco Cohort: Waterfront residents receive training to build a female-led cohort of media producers, researchers, and advocates. The capacity building programme includes audio visual media productions skills, public health awareness and advocacy as well as research and data collection skills.

Data Gathering: The project engages community members in gathering accurate and appropriate data by on the ground and drone-based data collection and infrastructure surveys. Also, an assessments of community services with a special focus on the impacts of the forced evictions and public health service delivery are conducted.



Contact Person

Barbara Summers
barbara@cmapping.net



Changing the Narrative and Documenting Demolitions: Media is a key component of the project aiming to change the negative and exclusionary narratives about the waterfront communities and to deepen the discussion on public health, mass eviction and social justice. Therefore, media production and dissemination such as music, video and radio productions go in hand with editorial meetings and community cinema screenings.

Additionally, a micro-website, including a narrative geographies online platform, is launched. The site increases the visibility of the mass evictions and their intersection with public health issues. In order to create the website's content, storytelling and narrative building workshops are conducted, media is produced and digital encounters with duty bearers are initiated.

Piloting Renewable Energy: After the installation of a solar system, the project trains members of the Chicoco cohort and the community in technical skills for maintaining and managing the renewable energy system.

About CMAP

CMAP mobilized in 2009 as an urgent response to an outbreak of violent mass demolitions and forced evictions in Port Harcourt. CMAP's mission is to help waterfront slum communities of Port Harcourt seen, heard and acknowledged as equal citizens with a vital role to play in shaping their city.

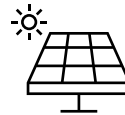
Achieved Results



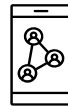
25 community members are trained in media production to build a female-led production team



44 waterfront community profiles including community histories and maps of community boundaries, structures, and infrastructure were created



A pilot renewable energy system was installed, and 11 people were trained in performing maintenance in the renewable energy system



Over 150,000 people were reached by radio broadcasts on public health advocacy programmes

The Recover Better Support Fund supports efforts designed and implemented in partner countries to recover from the impacts of the COVID-19 pandemic with the goal of building more resilient, inclusive, and sustainable societies while advancing the 2030 Agenda. For that purpose, it deploys two funding lines: (1) Sustainable development advisory bodies and (2) leaving no one behind and strengthening socio-economic resilience. Commissioned by the German Federal Ministry for Economic Cooperation and Development (BMZ), it supports 23 projects in 16 countries worldwide with up to 180.000 EUR.

GIZ implements the Recover Better Support Fund. For further information, please visit www.recoverbettersupportfund.com or contact the funds team at recoverbetterfund@giz.de

Published by

Deutsche Gesellschaft für
Internationale Zusammenarbeit (GIZ) GmbH
Registered offices Bonn and Eschborn, Germany
Sector Project 2030 Agenda, Reducing Poverty and
Inequality
Friedrich-Ebert-Allee 32 + 36
53113 Bonn
T +49 288 44600
recoverbetterfund@giz.de
www.recoverbettersupportfund.com

As at

July 2023

Design

GIZ

Text

Marie-Theres Wohlfahrt

GIZ is responsible for the content of this publication.

On behalf of

Federal Ministry for Economic
Cooperation and Development (BMZ)

Division

Sector and Global Programmes (GloBe)